



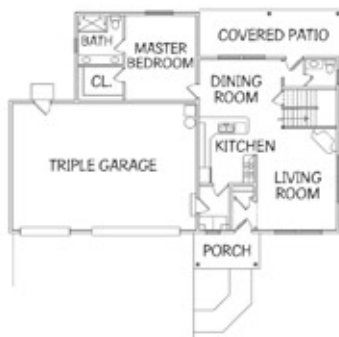
509-457-4233
www.dhconstructioninc.com

Welcome to another DH Construction home. Doug and Tom are proud to share with you this two story home which offers many indoor and outdoor features.

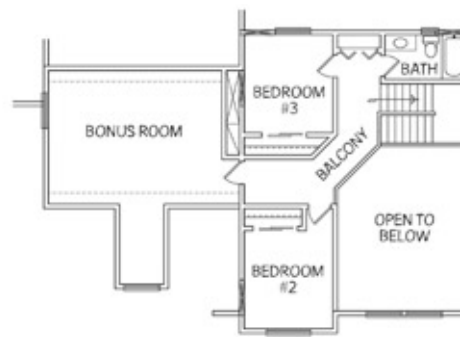
From the exterior you will see the attention to detail with the attractive dormer above the three bay garage which gives the bonus room an even more expansive feel. The covered patio off the back of this home gives you all the benefits of comfort and protection from the elements.

The interior will take your breath away as you enter and experience a living area that rises to over 18-feet, allowing an abundance of natural light into this home. You will also see the open rail staircase leading to the second story which contains a full bath, two bedrooms and a huge bonus room. The main floor has a beautiful kitchen, informal dining room, guest bath and a large master suite with a walk-in closet and double vanity in the bath. We hope you will enjoy this wonderful home.

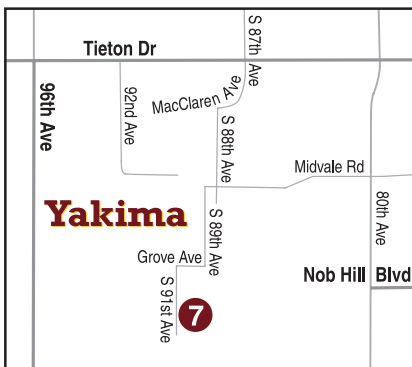
Our reputation is built on our attention to detail and service to our clients.



Main Floor Plan



Upper Floor Plan



1017 South 91st Avenue • Yakima, WA

Directions: From Tieton Drive headed west, turn left on South 87th Avenue. Follow South 87th Avenue as it becomes MacClaren Avenue then South 88th Avenue. Turn right on Midvale Road. Turn left on South 89th Avenue. Turn right on Grove Avenue. Turn left on South 91st Avenue. The home is located on the left side of South 91st Avenue.



Doug Hughes