



CHILLARD



509-829-6858
sgust@nwinfo.net



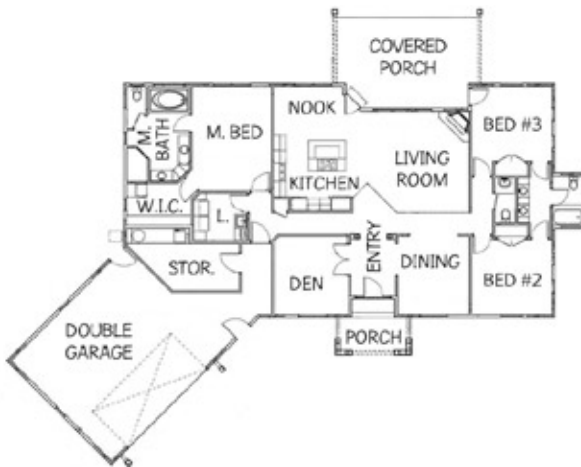
Look for the ENERGY STAR® features in the home.

Welcome to another of our Lower Valley homes in the country. The location offers a great view of Mt. Adams and the surrounding valley. We designed this single-level home without any exterior entry steps allowing it to function well for retirement, or a growing family. The exterior style has a "Mediterranean" feel, while the interior has our signature fine woodworking combined with the creative styling of our homeowners.

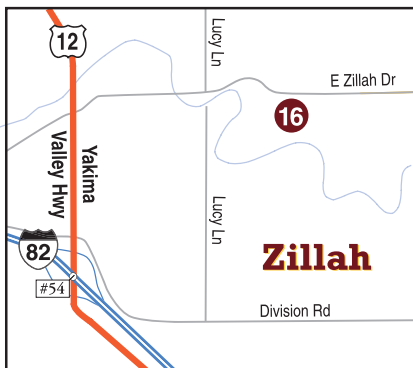
As a design/build company we use computer-aided design with 3D capability to create working blueprints, and collaborate with our customers from conception to completion of their home.

Thanks to our homeowners for giving us the opportunity to show their home on this year's Tour. Also, our thanks to Tour-goers for your compliments and support, and for choosing three of our previous Tour entries for the "People's Choice Award."

Our reputation is built on attention to detail, from design through exceptional finish work. Gust Builders has been earning the confidence of our customers here in the Yakima Valley for over nineteen years.



Main Floor Plan



2920 East Zillah Drive • Zillah, WA

Directions: From I-82 eastbound take exit #54 at Zillah. Turn left on Yakima Valley Highway. Turn right on East Zillah Drive. The home is located at 2920 East Zillah Drive.



Scott Gust