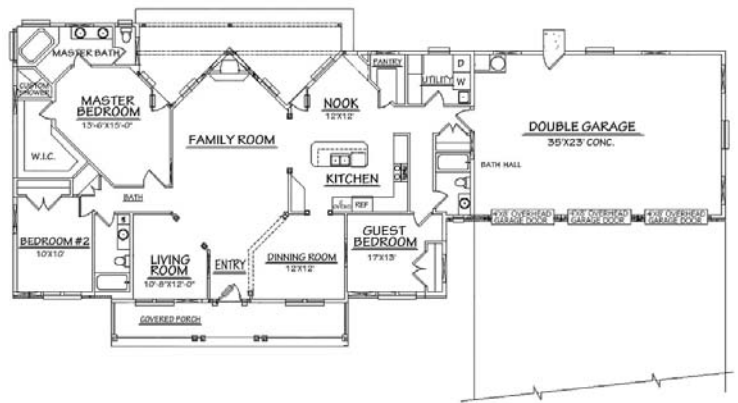
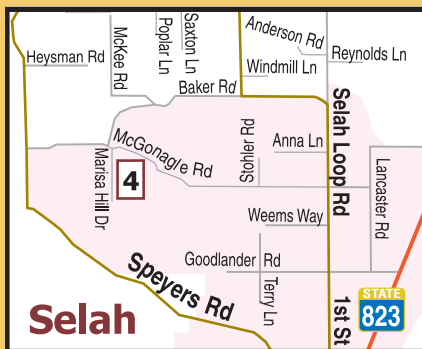


**71 Marisa Hill Drive, Selah, WA**

Enjoy awesome views from this custom built 2,256 square foot Selah home with three bedrooms, three baths and a large three-car garage. Special features of this home include a formal dining room with oak columns, a vaulted ceiling with a dormer skylight and a large kitchen with an island, breakfast bar and nook. As you enter the home, you are greeted with a spacious living room featuring a large vaulted ceiling, gas fireplace and another dormer skylight. The master suite has a large walk-in closet, luxurious master bath with a custom tiled walk-in shower, double vanities and Jacuzzi tub. The back of the home has a covered patio off the kitchen area as well as a private patio for the master suite. The beautiful covered, columned front porch makes viewing the Selah valley an enjoyable experience. J.L. Thomas Construction would like to thank all the specialty contractors and suppliers who contributed to this project.



**Main Floor**



**Directions:** Enter Selah and proceed North on 1<sup>st</sup> Street, which will become Selah Loop Rd. Turn left on McGonagle Rd. Turn left on Marisa Hill Dr. and park at the base of the hill. A shuttle will take you to the home.



**Jim & Lora Thomas**  
**509-952-8203**