

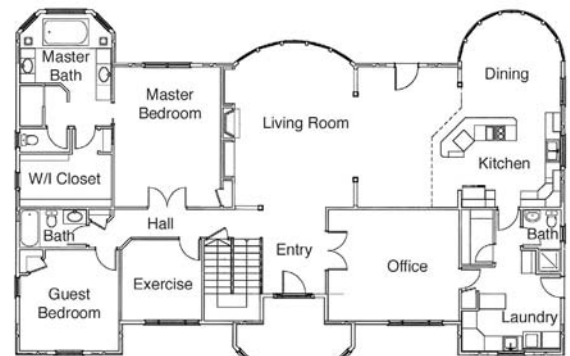


**4840 Highland Drive, Zillah, WA**

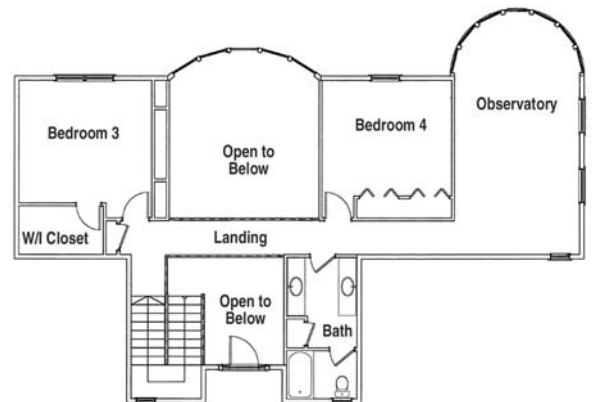
Welcome to another of our Lower Valley family homes in the country. This two-story home offers many indoor & outdoor observation areas to enjoy the expansive view of mountains and the surrounding valley. The exterior style is our interpretation of "Mediterranean", while the interior has our signature fine woodworking combined with the creative styling of our homeowners.

As a design/build company, we use computer-aided design to create working blueprints, and collaborate with our customers from conception to completion of their home. Thanks to our homeowners for giving us the opportunity to show their home on this year's Tour, and thanks to Tour-goers for your compliments and support on previous Tours.

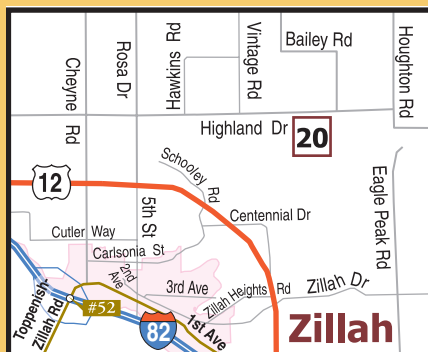
Our reputation is built on attention to detail, from design through exceptional finish work. Gust Builders has been earning the confidence of our customers here in the Yakima Valley for 18 years.



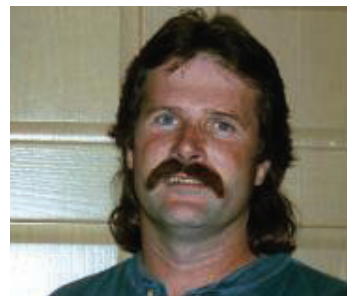
**Main Floor**



**Upper Floor**



**Directions:** From Yakima, follow Interstate 82 East and take Exit 52 to Zillah. Turn left on Toppenish Zillah Rd. Toppenish Zillah Rd. will veer right and become 1st Ave. Continue on 1st Ave. and turn left on 5th St. 5th St. will become Roza Dr. Continue on Roza Dr., across Yakima Valley Hwy. to Highland Dr. and turn right. Continue on Highland Dr. about two-miles. The home is located at 4840 Highland Dr.



**Scott Gust**  
**509-829-6858**



Gust Builders is a partner in the Pacific Power ENERGY STAR® New Homes program.